

Two Part Invention #9

Original key of F minor

Johann Sebastian Bach
arr. Suzanne Dicker

Violoncello 1

Violoncello 2

Violoncello 3

Violoncello 4

4

Vc.

Vc.

Vc.

Vc.

7

Vc.

Vc.

Vc.

Vc.

10

Vc. Vc. Vc. Vc.

This system contains measures 10, 11, and 12. It features four staves of Violoncello (Vc.). The first staff has a melodic line with many slurs and accents, including two 'V' markings above the staff. The second and third staves provide harmonic support with various rhythmic patterns. The fourth staff has a more sparse accompaniment. The key signature has three flats, and the time signature is 3/4.

13

Vc. Vc. Vc. Vc.

This system contains measures 13, 14, and 15. It features four staves of Violoncello (Vc.). The first two staves have dense, fast-moving melodic lines with many slurs and accents, including 'V' markings. The third and fourth staves have a more rhythmic accompaniment. The key signature changes to two flats and one sharp (B-flat major) in measure 13. The time signature remains 3/4.

16

poco rit.

Vc. Vc. Vc. Vc.

This system contains measures 16, 17, and 18. It features four staves of Violoncello (Vc.). The first staff has a melodic line with slurs and accents, including 'V' markings. The second and third staves have a rhythmic accompaniment. The fourth staff has a more sparse accompaniment. The tempo marking *poco rit.* is present above the first staff. The key signature has two flats and one sharp (B-flat major). The time signature remains 3/4.

18

Vc. Vc. Vc. Vc.

This system contains measures 18, 19, and 20. The first staff (Vc.) features a complex, rhythmic pattern of eighth and sixteenth notes with slurs. The second staff (Vc.) has rests in measures 18 and 19, followed by a half note in measure 20, and then a melodic line starting in measure 21. The third staff (Vc.) has a melodic line in measure 18, followed by a half note in measure 19, and then a half note in measure 20. The fourth staff (Vc.) has a half note in measure 18, followed by a whole rest in measure 19, and then a half note in measure 20. A 'V' marking is present above the second staff in measure 20.

21

Vc. Vc. Vc. Vc.

This system contains measures 21, 22, and 23. The first staff (Vc.) continues the complex rhythmic pattern from measure 18. The second staff (Vc.) has a melodic line starting in measure 21, followed by a half note in measure 22, and then a half note in measure 23. A 'V' marking is present above the second staff in measure 21. The third staff (Vc.) has a half note in measure 21, followed by a half note in measure 22, and then a half note in measure 23. The fourth staff (Vc.) has a half note in measure 21, followed by a half note in measure 22, and then a half note in measure 23.

24

Vc. Vc. Vc. Vc.

This system contains measures 24, 25, and 26. The first staff (Vc.) continues the complex rhythmic pattern from measure 18. The second staff (Vc.) has a melodic line starting in measure 24, followed by a half note in measure 25, and then a half note in measure 26. A 'V' marking is present above the second staff in measure 25. The third staff (Vc.) has a half note in measure 24, followed by a half note in measure 25, and then a half note in measure 26. The fourth staff (Vc.) has a half note in measure 24, followed by a half note in measure 25, and then a half note in measure 26.

27

Vc.

Vc.

Vc.

Vc.

30

Vc.

Vc.

Vc.

Vc.

32

rit.

Vc.

Vc.

Vc.

Vc.

Violoncello 1

Two Part Invention #9

Original key of F minor

Johann Sebastian Bach
arr. Suzanne Dicker

Measures 1-3 of the piece. The music is in 3/4 time, F minor, and begins with a bass clef. The first measure contains a quarter note G2, a quarter note A2, and a quarter note B2. The second measure contains a quarter note C3, a quarter note D3, and a quarter note E3. The third measure contains a quarter note F3, a quarter note G3, and a quarter note A3. The key signature changes to D minor for the next two measures.

Measures 4-5. Measure 4 contains a quarter note B2, a quarter note C3, and a quarter note D3. Measure 5 contains a quarter note E3, a quarter note F3, and a quarter note G3. The key signature changes to F minor for the next two measures.

Measures 6-8. Measure 6 contains a quarter note A3, a quarter note B3, and a quarter note C4. Measure 7 contains a quarter note D4, a quarter note E4, and a quarter note F4. Measure 8 contains a quarter note G4, a quarter note A4, and a quarter note B4. The key signature changes to D minor for the next two measures.

Measures 9-12. Measure 9 contains a quarter note C4, a quarter note B3, and a quarter note A3. Measure 10 contains a quarter note G3, a quarter note F3, and a quarter note E3. Measure 11 contains a quarter note D3, a quarter note C3, and a quarter note B2. Measure 12 contains a quarter note A2, a quarter note G2, and a quarter note F2. The key signature changes to F minor for the next two measures.

Measures 13-15. Measure 13 contains a quarter note E2, a quarter note D2, and a quarter note C2. Measure 14 contains a quarter note B1, a quarter note A1, and a quarter note G1. Measure 15 contains a quarter note F1, a quarter note E1, and a quarter note D1. The piece concludes with a final cadence in F minor.

16 *poco rit.*

Violoncello 1, measures 16-18. The music is in a bass clef with a key signature of two flats (B-flat and E-flat). Measure 16 begins with a 'V' marking above the staff. Measure 17 features a 'poco rit.' marking above the staff. The notation includes eighth notes, slurs, and accents.

19

Violoncello 1, measures 19-21. The notation continues with eighth notes, slurs, and accents.

22

Violoncello 1, measures 22-24. The notation continues with eighth notes, slurs, and accents.

25

Violoncello 1, measures 25-27. The notation continues with eighth notes, slurs, and accents.

28

Violoncello 1, measures 28-30. Measure 29 features two 'V' markings above the staff. The music concludes with a double bar line.

31 *rit.*

Violoncello 1, measures 31-33. Measure 31 features a 'rit.' marking above the staff. The music concludes with a double bar line.

Two Part Invention #9

Violoncello 2

Original key of F minor

Johann Sebastian Bach
arr. Suzanne Dicker

4

7

10

14 *poco rit. .*

17

22

26

30

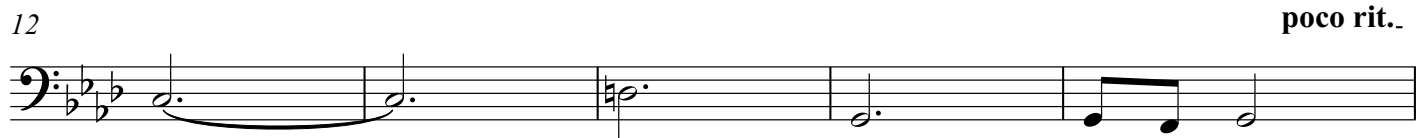
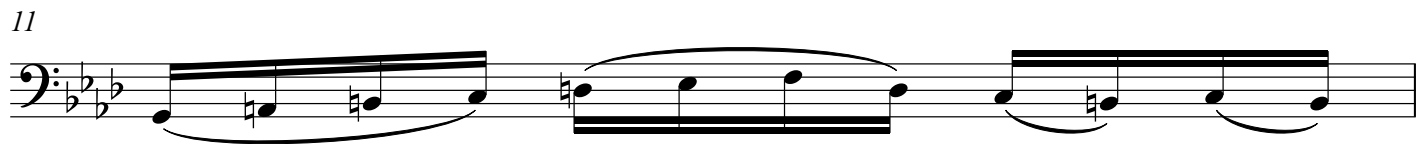
32 *rit. .*

Two Part Invention #9

Violoncello 3

Original key of F minor

Johann Sebastian Bach
arr. Suzanne Dicker



Violoncello 4

Two Part Invention #9

Original key of F minor

Johann Sebastian Bach
arr. Suzanne Dicker

2

Musical notation for measures 1-7 of the first system. The key signature is F minor (three flats) and the time signature is 3/4. Measure 1 contains a whole rest. Measure 2 contains a whole rest. Measure 3 contains a quarter rest followed by eighth notes G4, A4, Bb4, and C5. Measure 4 contains a quarter rest followed by eighth notes Bb4, A4, G4, and F4. Measure 5 contains a quarter rest followed by a half note G4. Measure 6 contains a quarter rest followed by a half note F4. Measure 7 contains a quarter rest followed by a half note E4.

8

Musical notation for measures 8-13 of the second system. Measure 8 contains a quarter rest followed by a half note D4. Measure 9 contains a quarter rest followed by a half note C4. Measure 10 contains a quarter rest followed by a half note Bb4. Measure 11 contains a quarter rest followed by a half note A4. Measure 12 contains a quarter rest followed by a half note G4. Measure 13 contains a quarter rest followed by a half note F4.

14

poco rit..

Musical notation for measures 14-22 of the third system. Measure 14 contains a quarter rest followed by a half note E4. Measure 15 contains a quarter rest followed by a half note D4. Measure 16 contains a quarter rest followed by a half note C4. Measure 17 contains a quarter rest followed by a half note Bb4. Measure 18 contains a quarter rest followed by a half note A4. Measure 19 contains a quarter rest followed by a half note G4. Measure 20 contains a quarter rest followed by a half note F4. Measure 21 contains a quarter rest followed by a half note E4. Measure 22 contains a quarter rest followed by a half note D4.

23

Musical notation for measures 23-28 of the fourth system. Measure 23 contains a quarter rest followed by eighth notes C4, Bb4, A4, G4, F4, and E4. Measure 24 contains a quarter rest followed by a half note D4. Measure 25 contains a quarter rest followed by a half note C4. Measure 26 contains a quarter rest followed by a half note Bb4. Measure 27 contains a quarter rest followed by a half note A4. Measure 28 contains a quarter rest followed by a half note G4.

29

rit..

Musical notation for measures 29-34 of the fifth system. Measure 29 contains a quarter rest followed by a half note F4. Measure 30 contains a quarter rest followed by a half note E4. Measure 31 contains a quarter rest followed by a half note D4. Measure 32 contains a quarter rest followed by a half note C4. Measure 33 contains a quarter rest followed by a half note Bb4. Measure 34 contains a quarter rest followed by a half note A4.